



TURNKEY REPAIR AND REPLACEMENT SERVICES



Why Geoservex?

Geoservex has been dealing with kilns since 40 years and are the market leaders in hot kiln alignment. We are now moving one step further by providing Turnkey repair and replacement services for both Kiln and Ball Mill equipments during shutdown time. We are well placed with very experienced specialists and extensive support by our associates in turnkey jobs.

Geoservex-India is bound to provide the best possible services in the Industry for all key rotary equipment's in the plant.

Long Service Life and High Availability of Equipments

Geoservex proudly launches its Turnkey repair and replacement services. Geoservex helps customers in achieving more operational availability of their key equipments. These jobs will be carried out by Geoservex Specialists at lowest possible time with highest quality.

Performance Redefined

Keep your equipment without any breakdown and trouble free operation. Geoservex can rebuild your equipment during shutdown time, provide the best services to you and ensure high availability of equipment to enhance the operation without compromising the quality of job.

Our Specialization



- Kiln Shell Replacement
- Kiln Tire/ Supporting Roller Replacement
- Kiln Girth Gear/ Pinion Reversal/Replacement
- Kiln Thrust Roller Replacement
- Kiln Inlet/Outlet seals Replacement.
- Ball Mill Inlet/Outlet Shell Replacement
- Ball Mill Inlet/Outlet Head Replacement
- Ball Mill Head with flange reaming
- Ball Mill Girth Gear/Pinion Reversal/Replacement
- Ball Mill Trunion/ Slide Shoe bearing Replacement.
- Grate Cooler alignment and overhauling

New tire assembly with kiln shell



Kiln shell Replacement



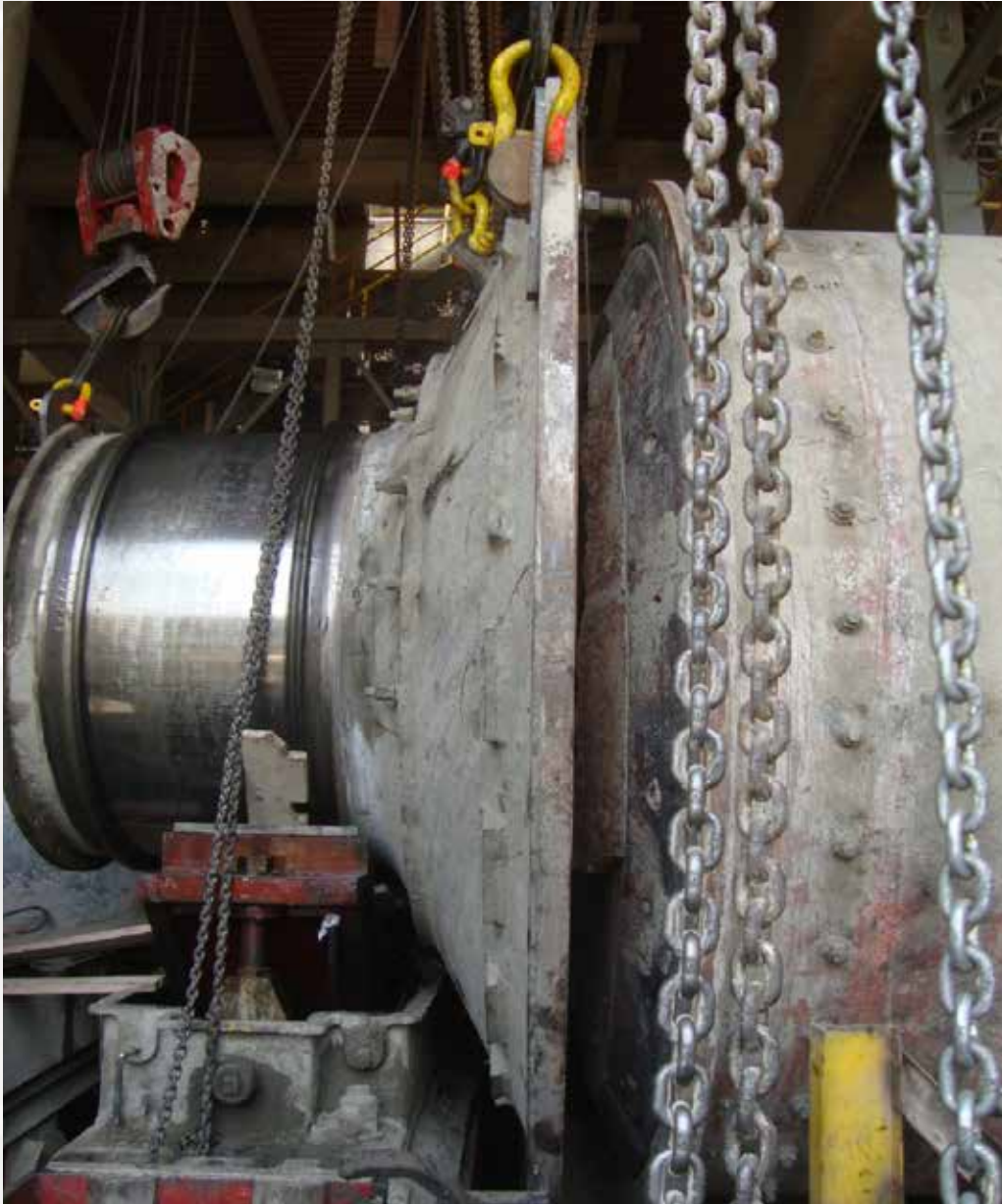
Kiln supporting roller Replacement



Ball mill Girth gear Replacement



Ball mill head Replacement



***The above jobs were done by our associates**

Few References from our associates

Turnkey Jobs done in Kiln			
S.No.	Group	Plant Name	Job
1.	HOLCIM	ACC Madukkarai Cement Works, Coimbatore, Tamilnadu.	Kiln shell 7.4mtr long, Girth gear, Pinion, Supporting Rollers 2 no's, Outlet cowl shell, Outlet tip casting, Inlet & Outlet seal Replacement
2.	TATA	TATA Chemicals, Mithapur, and Gujarat.	Kiln Girth gear, Pinion replacement & Supporting Rollers modification.
3.	India Cement	India Cement Ltd, Vishnupuram, Andhra Pradesh.	Kiln heavy shell with tire, Girth gear, pinion replacement and Drive station alignment
4.	B.K.Birla	Birla Cement corp., Satna, Rajasthan.	Outlet Kiln shell, Middle tire with shell & Girth gear with spring plate Replacement.
5.	My Home Industries Ltd	Sree Jaya Jothi Cement Ltd, Kurnool, and Andhra Pradesh.	Kiln Outlet shell with Hood, Cooler Bull Nose & Cyclone Dip Tubes Replacement.
6.	Century & Textiles Industries Ltd	Maihar Cement Ltd, Katni, Madhya Pradesh.	Kiln shell, Girth gear with spring plate Replacement.
7.	HOLCIM	ACC Gagal Cement Works, Gagal, and Himachal Pradesh.	Kiln Girth gear and Middle tire underneath shell and Support roller Replacement.
8.	Nepal Govt	Udayapur Cement Ltd, Nepal.	Replacement of Kiln shell 5.8mtr long with Outlet tire
9.	International Paper APPM Ltd	International paper APPM, Rajahmundry, Andhra Pradesh.	All three tires shifting, Tire alignment and Replacement of tire Retainer Block.
10.	West Coast	West Coast Paper Ltd, Dandeli, Karnataka.	Kiln Thrust Roller Replacement, Inspection of roller shaft condition and bearing replacement.
11.	Shivam Cements	Shivam Cement Ltd, Nepal.	Replacement of Kiln shell 2.8mtr long
12.	JSW	JSW Cement Ltd, Nandayal, Telangana.	Kiln Inlet Tire Replacement.
13.	Hindalco	Hindalco Industries Ltd, Belgaum, and Karnataka.	Kiln shell Replacement.
14.	ITC	ITC Paper and Specialty Paper Board, Bhadrachalam Unit, Telugana.	Replacement of Lime kiln Outlet shell 3.5mtr long.

Turnkey Jobs done in Ball Mill/VRM/Cooler			
S.No.	Group	Plant Name	Job
1.	Holcim	ACC Gagal Cement Works, Gagal, Himachel Pradesh.	Ball Mill Girth Gear and Pinion reversal & alignment.
2.	Vedanta	Vedanta Aluminum and Power Ltd, Jharsuguda, Odisha.	Ball mill Girth gear and Pinion Replacement and Drive station alignment.
3.	Votorantim	Sree Digvijay Cement Ltd, Jam Nagar, Gujarat.	Cement Mill Girth Gear Replacement with Both Pinions and Alignment.
4.	Hindalco	Hindalco Ltd, Sambalpur.	Autogenous Mill Shutdown Job.
5.	Vedanta	Hindustan Zinc Ltd, Chittorgarh, Rajasthan.	Ball Mill Pinion Replacement & Drive Alignment.
6.	Vedanta	Hindustan Zinc Ltd, Debari, Rajasthan.	Ball Mill Girth gear and Pinion reversal.
7.	Vedanta	Vedanta Aluminum and Power Ltd, Jharsuguda, Odisha.	Ball Mill Girth Gear and Trunnion Bearing Replacement.
8.	Holcim	ACC Wadi Cement Works, Wadi, Karnataka.	Ball Mill Girth gear Replacement.
9.	Vedanta	Vedanta Seago Limited, Goa.	Dismantling of Old Grinding Track and Assembling of New Grinding Track. Dismantling of Old Gear Box and Installing of New gear Box.
10.	HOLCIM	ACC Kymore Cement Works, Kymore, Madhya Pradesh.	Cooler Beam Replacement with Hydraulic Drive.

Pro-active on Safety

We depute qualified safety supervisor along with our specialist to ensure round the clock safe act + method + behavior. Our team work nurtures safe work environment for our employees and sub-contractor's workmen the same we ensure to strictly follow. We would like to highlight that all the jobs done by our associates has ZERO accidents. We stand committed to continue doing our best by making safety a mandatory requirement for all our employees and sub-contractors workmen. Please note all our tools are certified by recognized agency and we provide mandatory safety training to all our engineers."

Key Benefits:

- ▶ Minimize the shutdown and complete the job on given time frame.
- ▶ Highest quality of the job with tolerance limits for the reliability and availability of the equipment.
- ▶ Round the clock supervision by experienced Geoservex specialist for spot decision making and ensuring smooth flow of job and gets completed in time.
- ▶ Executed by highly experienced Geoservex specialist and our associates of GEPL technicians.
- ▶ Geoservex and our associates have been proven to maintain very high safety standard for the workmen and engineers, also we depute one safety engineer exclusively to look after the safety aspects of the job and ensure zero accident.
- ▶ Daily progress of the job will be updating to customers and immediate action can be taken to mitigate the slow progress of the job if any.
- ▶ Commissioning the equipment with full load operation.
- ▶ Our associates having certified tools and tackles and maintains high range of tools for the job.
- ▶ Zero breakdown of the equipment.





GEOSERVEX

Head Quarter In Poland

Geoservex, Zbigniew Krystowczyk,
Engineering Measurements Enterprise,
Str.Kościuszki 27/19A,
85-079 Bydgoszcz, Poland

Tel : + 48 52 3456 250,
Fax : + 48 52 3456 255
email : office@geoservex.com

Head Quarter In India

Geoservex Hub India Pvt Ltd,
Krunal Porecha (G.M- Sales & Service)
F2, B1, Sai Krish, 4th Main road,
CBI colony, Perungudi,
Chennai- 600 096, India.

Contact No : +91 90030 88004
email : office-india@geoservex.com